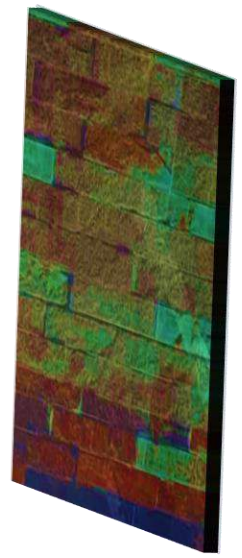


# Washed Bricks – Thin Film



High-efficiency Australian-Certified Building-integrated photovoltaic (BIPV) module.

Provide savings in materials and electricity costs, reduce greenhouse gases, and add aesthetic architectural features to the building

**Improve  
Building  
Sustainability**

**Create  
Cost-saving  
Opportunities**

**Mimic  
Building  
materials**



Low carbon footprint



Aesthetic



Certified in Australia as a building material



Excellent thermal insulation

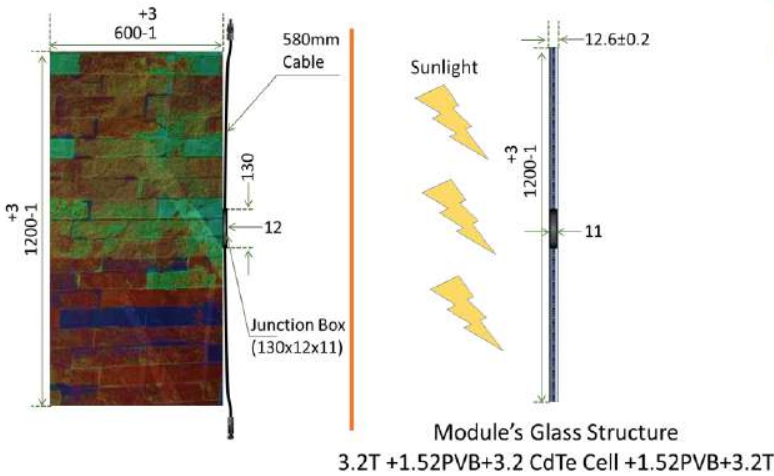


Durable and Shatter-proof



Energy saving

# Terracotta – Thin Film



**CdTe Washed Brick BIPV module**  
**AST-WBR00077**

## Specifications

### Electrical Specifications

(at STC: 1000W/m<sup>2</sup>, 25°C, AM1.5)

Nominal Power (Pm), W	77.08
Open Circuit Voltage (Voc), V	118.34
Voltage at max. Power (Vm), V	91.10
Current at max. Power (Im), A	0.85

### System Properties (at STC)

Maximum System Voltage, V	V <sub>SYS</sub>	1000 (600UL)
Limiting Reverse Current, A	I <sub>R</sub>	3
Maximum Series Fuse, A	I <sub>CF</sub>	3

### Temperature Coefficients (at STC)

Temperature Coefficients of I <sub>sc</sub> , %/°C	0.06
Temperature Coefficients of V <sub>oc</sub> , %/°C	-0.321
Temperature Coefficients of P <sub>m</sub> , %/°C	-0.214
Operating Temperature range, °C	-40 to 85

### Mechanical Specifications

Length	1200mm
Width	600mm
Thickness	12.6mm
Area	0.72m <sup>2</sup>
Weight	20.0kg
Frame	None
Lead Cable	2.5mm <sup>2</sup> 580mm
Connectors	MC4
Bypass Diode	6A
Cell Type	CdTe
Module structure	3.2mm+3.2mm+Cells+3.2mm
Cover Glass	Tempered
Back Glass	Tempered
Encapsulation	PVB

### Packaging Configuration

Modules Per Pallet	30 PCS
Pallet Weight	680 kg
Pallet Dimensions	1260mmx1080mmx790mm
Modules Per 40' Container	1080 PCS

## Warranty:

- 10 years materials and workmanship.
- 25 years power output guarantee for:
  - 90% of nominal output during 1st 10 years & 80% over 25 years
  - End-of-life modules will be collected&recycled by AST at no cost

## Alpha Solar Technologies Pty Ltd

Unit 1/93A Leach Hwy, Kewdale WA 6105,  
Australia.

[www.alphasolartech.com](http://www.alphasolartech.com)

Email: [sales@alphasolartech.com.au](mailto:sales@alphasolartech.com.au)

Tel: +61-8-6239 0230